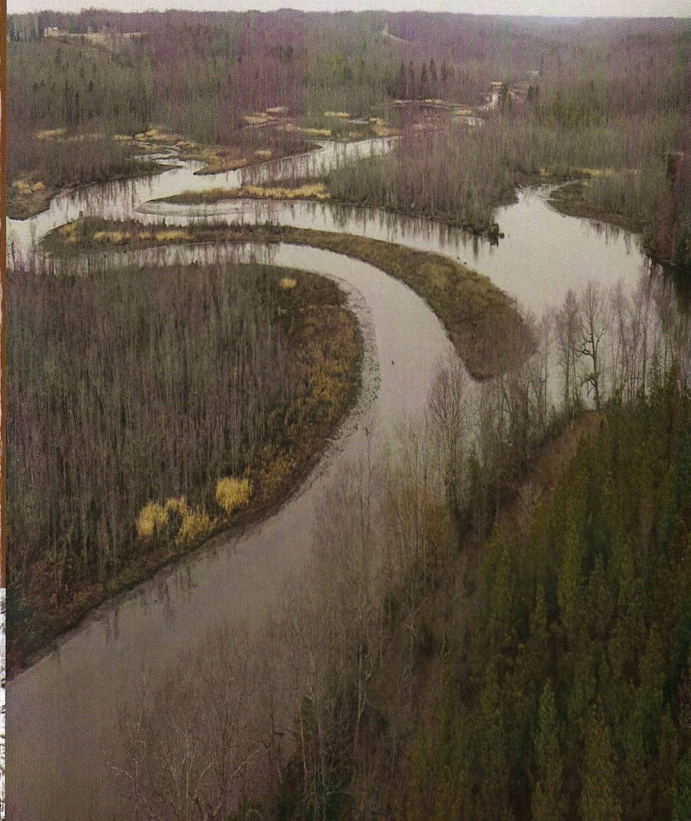


## *Why Preserve Cat Point Creek?*

- Improved water quality from reducing land fragmentation
- Protected wetland and wildlife habitat by preserving natural breeding and nesting areas
- Preserved natural view sheds and protected lands surrounding United States historic areas
- An open space corridor between historic sites on the Potomac River and existing protected areas on the Rappahannock River



PO Box 125  
8327 Mary Ball Road  
Lancaster, VA 22503

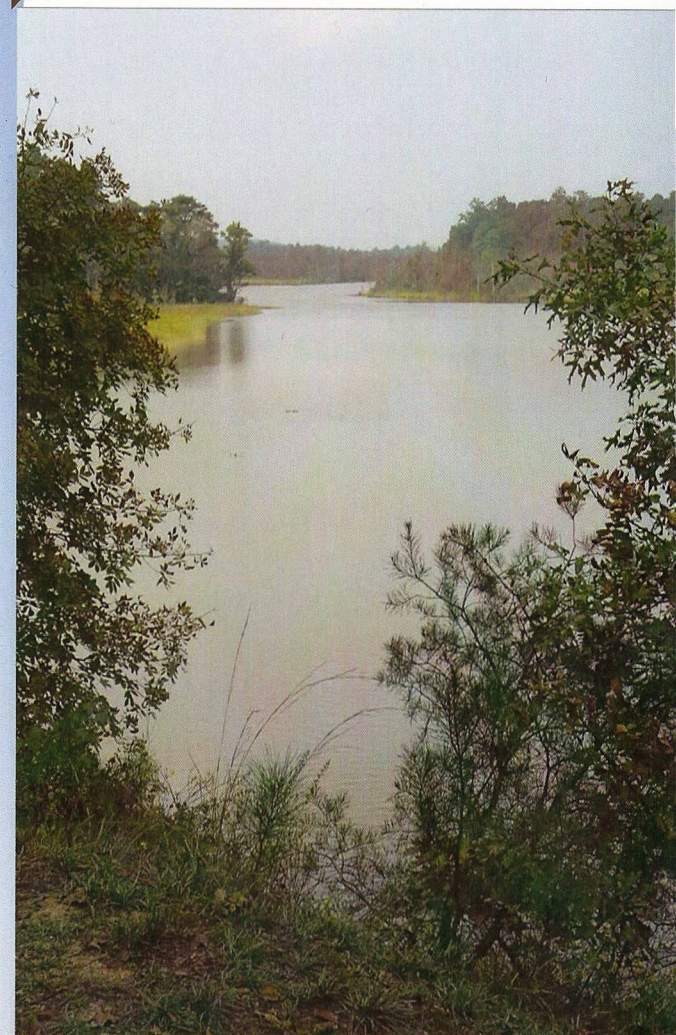
Phone: 804-462-0979  
Fax: 804-462-5232  
E-mail: [nnlc@kaballero.com](mailto:nnlc@kaballero.com)  
Website: [www.nnconserve.org](http://www.nnconserve.org)

8/2011

## **Cat Point Creek**

**A Treasure Worth  
Preserving**

**Northern Neck Land Conservancy**







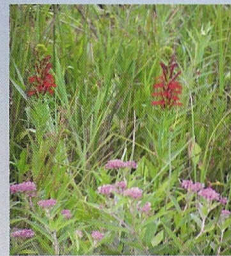
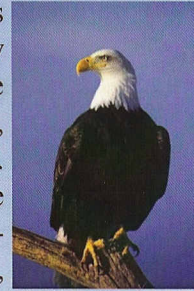
## Preserving Cat Point Creek:

### A Special Natural Resource

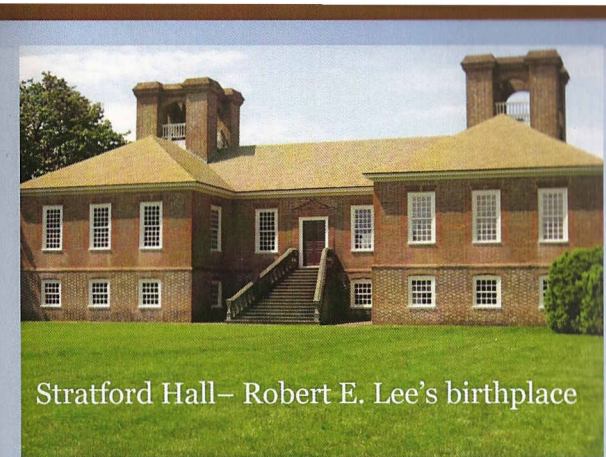
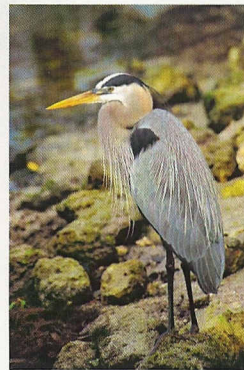
*The Cat Point Creek watershed on the Northern Neck is one of the most valuable ecological, environmental and historic areas in Virginia. The watershed rises on the northern edge of the Neck and runs nearly 20 miles south to the Rappahannock River. It originates as the confluence of several small streams which become Cat Point Creek. As such, the watershed runs through Richmond and Westmoreland counties, borders Stratford Hall, George Washington's Birthplace, Westmoreland State Park and runs past Menokin Plantation and through the Rappahannock River Valley National Wildlife Refuge. It consists of 46,800 acres of hilly terrain and includes many farms, streams, millponds and wetland estuaries. The Nature Conservancy has designated Cat Point Creek as one of the last great places in the coastal plain of Virginia.*

### An Environmental Oasis

Environmentally and ecologically important, the vast unspoiled watershed is nursery and home to many species necessary for the health of the Chesapeake Bay, as well as those who live here. The creek harbors one of the highest wintering concentrations of bald eagles in the east, attracted by the shad and perch runs and the rafts of wintering waterfowl. The National Audubon Society's Rappahannock



River Important Bird Area was primarily designated because of bald eagles, which are still federally and state protected. Undisturbed forests are one of the watershed's most cherished asset, and the marsh vegetation supports water quality and a rich array of animal and native plant life. Osprey, blue heron, and wood ducks make the creek their home. In addition to perch and shad; catfish, large mouth bass, crappie, herring, and rockfish swim throughout the creek. This serene creek is alive with activity as otters play along the banks, beavers are busy with their lodges and blackbirds feed on wild rice in late summer.



Stratford Hall– Robert E. Lee's birthplace

### History Surrounding Cat Point Creek

The historical significance of this beautiful region is unsurpassed as evidenced by the location of ancestral homes of two signers of the Declaration of Independence and the first American President.

